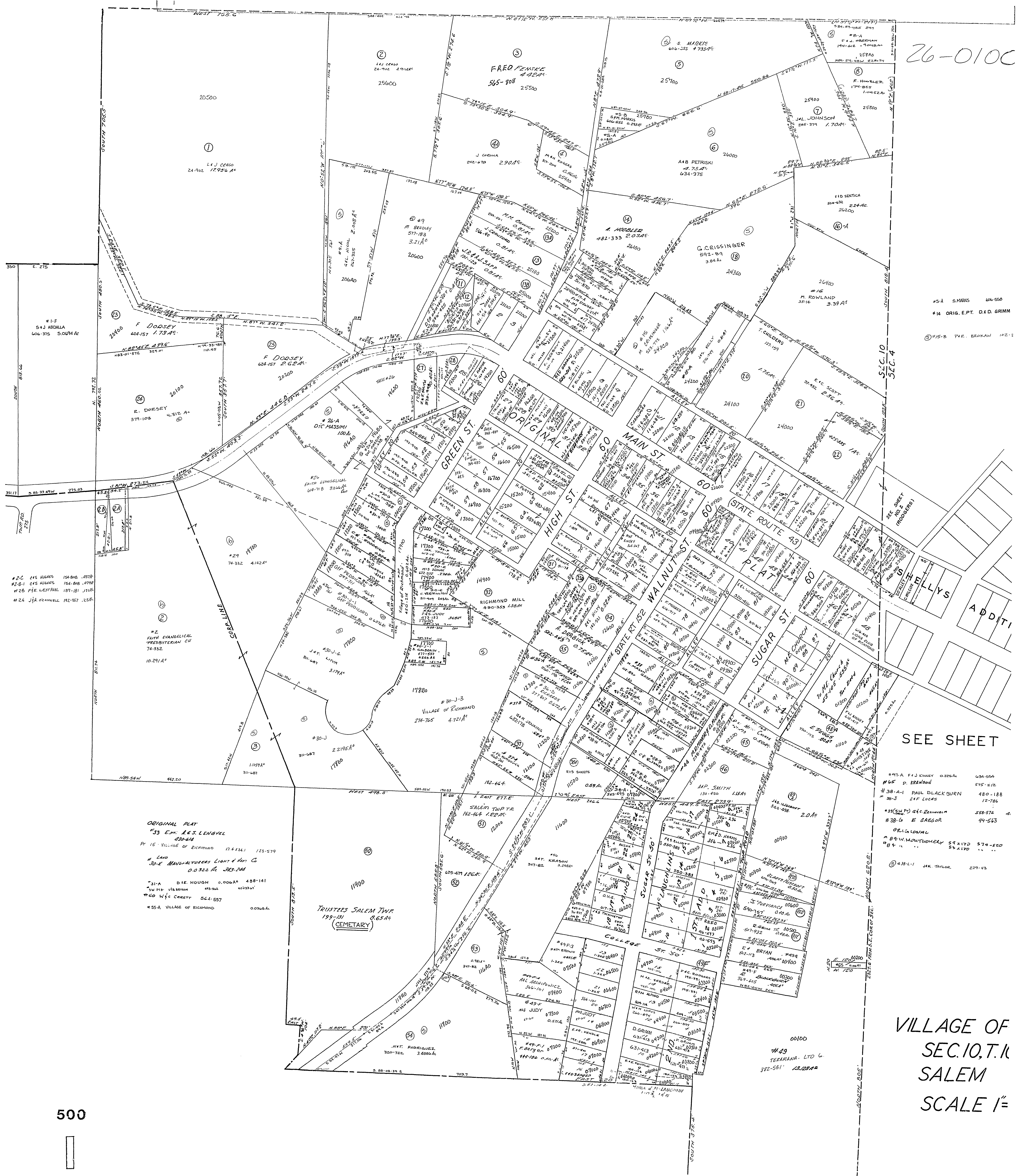


26-010C



#5-A S. MARIS 606-255 #73375
 #14 ORIG. E.P.T. D.F.D. GRIMM
 #15-B PAR. BREAKAW 102-1

SEE SHEET

#97-A F.J. KINNEY 0206A 65A-55A
 #16 P. KRAWSON 575-272
 #38-A-1 PAUL BLACKBURN 480-188
 #38-J E.P. LUCAS 12-786
 #38-C-1 G.C. ZEINWALD 558-574
 #38-G E. GREGOR 94-563
 #38-L-1 J.K. TAYLOR 279-45

ORIGINAL PLAT
 #33 E.P. A.C.S. LINGVEL
 830-616
 Pt. 15 - VILLAGE OF RICHMOND 174-136.1 125-579
 # LAND
 #30-K MANUFACTURERS LIGHT & HEAT CO
 0-0322 AC 303-744
 #31-A D.I.E. HOUGH 0-006A 488-141
 #31-B VIBERTSON 415-502 6013301
 #60 WIFE CARETR 364-557
 #55-A VILLAGE OF RICHMOND 0-006A

TRUSTEES SALEM TWP
 199-191
 (CEMETARY)
 865-46

VILLAGE OF
 SEC. 10, T. 11
 SALEM
 SCALE 1" =